



WE KNOW OUR COMMUNITIES BY HEART

Community Impact Report
FY2023



Jefferson

REPORT

+ WE IMPROVE LIVES



Nearly 200 years ago, Jefferson Medical College (now Sidney Kimmel Medical College at Thomas Jefferson University) identified a significant need and opened a small medical clinic to care for the poor of Philadelphia. Today, our medical college has evolved into the new Jefferson – Thomas Jefferson University, Jefferson Health and Jefferson Health Plans – all committed to improving lives.

As the region's second-largest employer, Jefferson has impacted the community in far-reaching ways with a legacy of service that runs deep. Our dedication to enriching the lives of others is the cornerstone of what makes Jefferson unique, and it is the reason why so many choose us as their employer, their educator, their care provider and their health insurer.

Being a force for good is in Jefferson's DNA, and as Mahatma Gandhi said: "The best way to find yourself is to lose yourself in the service of others." This couldn't be truer of our employees and students – amazing citizens who are passionate about their community and grassroots initiatives to improve the lives of others. Their work is meaningful, purposeful and personal.

I am proud that in our culture, there is an expectation that everyone in the Jefferson family is involved in some kind of charitable effort. Some of these efforts are counted through our official community benefit reporting, but there are so many other ways we demonstrate our commitment. One such example is the addition of Dr. Keith Leaphart to my team. A celebrated Philadelphia native, respected physician and renowned entrepreneur and philanthropist, Dr. Leaphart is Jefferson's Chief Health Equity and Community Impact Officer. His expansive expertise will help guide our enterprise-wide strategy for creating local and national partnerships to eliminate health disparities, and aligning all of our diversity, equity and community benefit initiatives to have a much greater impact on those we serve, and those who need our help.

The past few years have tested our collective resilience – with a global pandemic, a growing awareness of social injustice, economic and climate disruptions and continuing financial headwinds. In spite of these challenges, our 42,000 employees and 8,300 students continue to raise up others and positively contribute to the well-being of society and our communities. Because of our unparalleled legacy of service that spans nearly two centuries, we will always be committed to putting people first and improving lives – for generations to come.

I hope you enjoy our report and learn more about the many ways we are honored to serve.

Joseph G. Cacchione, MD
CEO | Jefferson


Strength in Numbers

United in mission-driven
community outreach

+ WE IMPROVE LIVES

Community Benefit Highlight

total net community benefit:
\$668,341,813



Jefferson has reached a pivotal milestone in our history – our 200th anniversary. What began as a medical college two centuries ago in 1824, has evolved into an institution that annually impacts hundreds of thousands of lives – lives of students, patients, health insurance subscribers, and most importantly, community members.

Our transformation and growth have created an organization that has significant strength in its numbers, and an enormous responsibility to:

- positively impact populations without access to the care they need
- educate the leaders of tomorrow who can change the world
- leverage the combined resources and commitment of Thomas Jefferson University, Jefferson Health and Jefferson Health Plans to 'do good' for the diverse populations we connect with daily

Last year, we collectively provided \$668 million in charitable care and community benefit. As a percentage of Jefferson's total expenses, that's more than any organization in this region has devoted to improving lives. Our patient care, academic programs, volunteer outreach and advocacy efforts have a profound impact that echoes throughout the Delaware Valley. And we do not take the role we play or this responsibility lightly, because as a T.E.A.M (Together, Everyone Achieves More) that harnesses our combined resources – we know that what we do makes a difference. Society benefits and lives improve. As an organization of healers, educators, researchers and providers, there is no greater honor and no higher calling.



+ WE IMPROVE LIVES





Jefferson Health's most direct impact on community health is through the breadth and depth of the high-quality and safe care we provide to patients. Last year, we cared for more than:

145,000 INPATIENTS

5.6 MILLION OUTPATIENTS

580,000 EMERGENCY ROOM PATIENTS

Through our extensive community outreach, Jefferson Health and its 17 hospitals throughout southeastern Pennsylvania and southern New Jersey, provide access to medical care that extends beyond its walls and is delivered directly to individuals where they live. By partnering with grassroots organizations, we seek to improve the health and well-being of communities through prevention and wellness programs, health education seminars, screenings and more.

COMMUNITY OUTREACH

It would be difficult to share all of our community-based programs and grassroots initiatives, but we'd like to highlight a few that are emblematic of our broad-based efforts.






Community Impact 2023 |
Addressing Social and Structural Determinants of Health

HEALTH EQUITY

Jefferson is committed to advancing community health and health equity among disenfranchised and marginalized populations throughout Greater Philadelphia.



Jefferson's work includes providing:

- Catalyst grants to local organizations to amplify their services to the community.
- Digital literacy programs that offer culturally competent digital readiness toolkits for Spanish-speaking communities.
- Health education, nutrition and housing solutions through our Better Together at Home program that collaborates with MANNA and Habitat for Humanity to address food and housing insecurity.

Above are just a few of the many community-based programs delivered by Jefferson.

A BETTER START

This preventive health education program provides comprehensive and multicultural prenatal, parenting and health education services at hospital sites, within local schools and throughout the community. The primary focus is to help multicultural populations develop healthy eating habits and improve physical activity.

We provided programming to 6,000 preschool children, 13,000 school-age children and 1,000 adults.

PROJECT R.O.L.E.

REDUCING READMISSIONS AND IMPROVING OUTCOMES FOR ESL PATIENTS

A U.S. Department of Health and Human Services grant funds this program to improve community understanding about how to navigate the health system, where available sources of care are located and how to access them. Our educational sessions reach communities of color in Camden, Gloucester and Burlington counties in New Jersey.

We educated over 500 English and Spanish speaking members.

CRIBS FOR KIDS SAFE SLEEP PROGRAM

This national program helps Jefferson provide portable, safe sleep supplies to low-income, vulnerable families. The goal is to promote safe sleep practices in infancy.

We distributed 100 cribs and educated 200 families on the importance of safe sleep.



Raising Awareness About Prevention and Early Detection of Chronic Disease

THE FRAZIER FAMILY COALITION FOR STROKE EDUCATION & PREVENTION

This Coalition is a health education and community navigation program in partnership with Temple University. With its office located in North Philadelphia, the lowest-income zip code in the city, the Coalition counters the lack of access to providers, unmanaged chronic disease and limited awareness of risk factors that have allowed the rate of stroke to swell. It links at-risk populations with education, resources and clinical care to prevent stroke, and connects patients who've had a stroke with the resources they need to prevent a reoccurrence.

The Coalition has 15 unique programs that bring education, screenings, and disease management workshops into the community.

Community Benefit Highlight

medicaid shortfall: \$223,323,938



CLOSING THE GAP

In collaboration with Novartis, Closing the Gap focuses on reducing cardiac health disparities across the city's most vulnerable zip codes and heavily uses Jefferson-trained community health workers to screen, identify and navigate high-risk individuals with cardiovascular disease to care and preventive services.

Community Benefit Highlight

**subsidized health services:
\$134,043,940**

STOP THE BLEED PROGRAM

This program focuses on preparing the public to save lives by training them on the basic actions to stop life-threatening bleeding (using a tourniquet). Jefferson trauma nurses and doctors have visited hundreds of schools and organizations to train individuals (in English and in Spanish) on this lifesaving skill.

Providers throughout Jefferson have conducted nearly 250 educational sessions.





SIDNEY KIMMEL CANCER CENTER MOBILE SCREENINGS

Increasingly, health care means bringing needed services to the community and not just providing services for the community. We drive healthcare access by delivering important screenings directly to underserved communities throughout the region.

Our Sidney Kimmel Cancer Center's mobile screening van evaluated over 1,000 women for breast cancer – with nearly **60% from underrepresented populations**. Abnormal results were identified in **16% of those screened, and six lives were saved**. The team has organized over **130 mobile breast and prostate screenings** in the past two years.

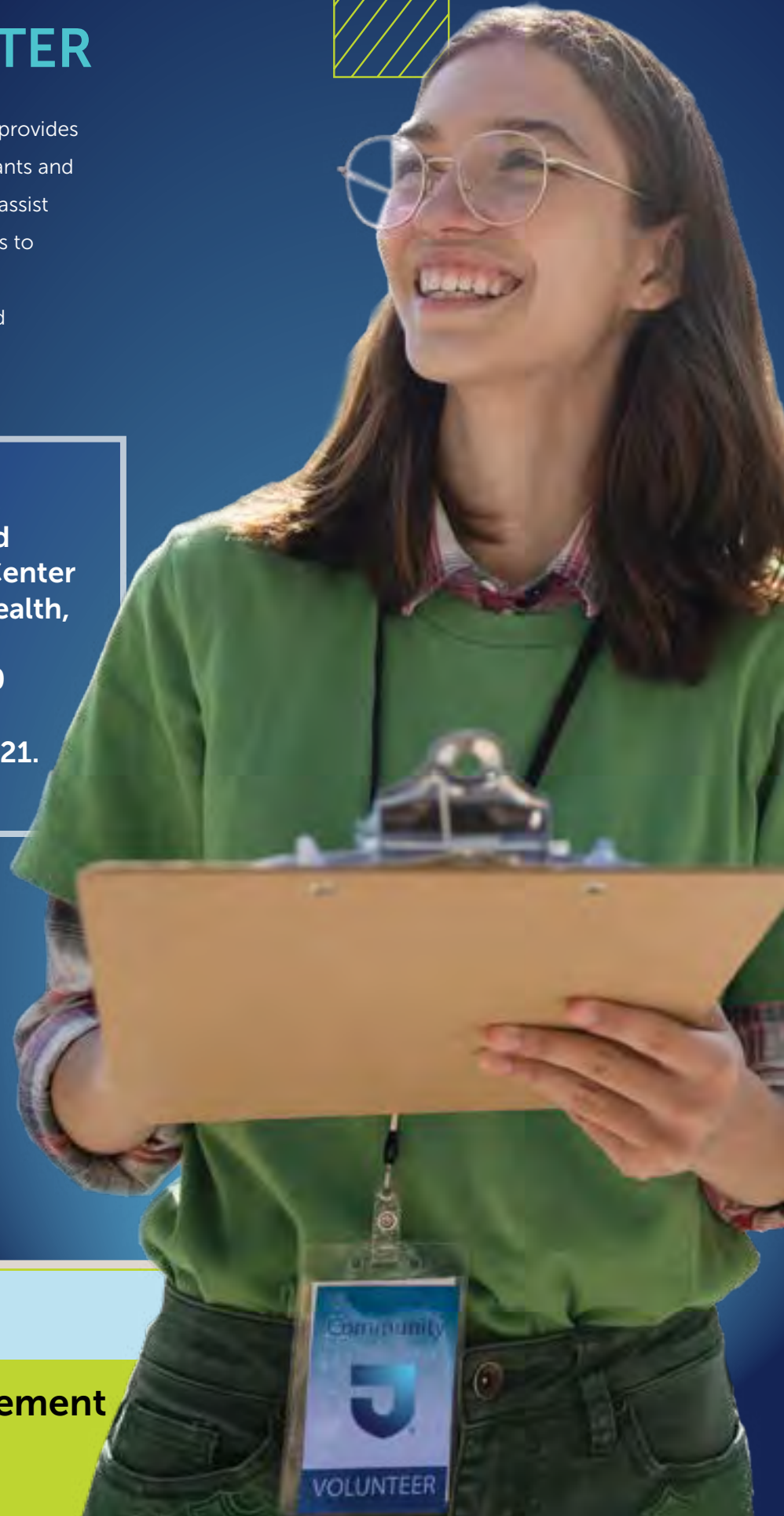
HANSJÖRG WYSS WELLNESS CENTER

The Center, located in South Philadelphia, provides free medical and social services to immigrants and refugees. These include: social services to assist with healthcare insurance coverage; access to community resources; health and nutrition education; and language interpretation and translation services.

Despite the COVID pandemic, the Wyss Wellness Center, and students from the Jefferson Center for Refugee and Immigrant Health, provided extensive volunteer medical support to over 1,600 Afghan evacuees arriving at Philadelphia Airport in late 2021.

Community Benefit Highlight

**community health improvement
services: \$7,817,855**



One of the keys to preventing chronic illnesses like diabetes and high blood pressure, or effectively managing them, is to recognize the value of “food as medicine.” Our healthcare providers routinely screen patients for food insecurity, and work with local organizations like MANNA, SHARE, Meals on Wheels, the Coalition Against Hunger and a variety of regional food pantries to connect patients with food assistance programs. We also provide programs like:

FRESH FOR ALL

This free, weekly market is held year-round for the community at Jefferson Einstein Hospital.

FRESH RX - GO FOR THE GREENS PROGRAM

Our onsite produce garden in Norristown is maintained by volunteer staff and supported by community partners. Enrolled families learn gardening tips and receive fresh produce, healthy recipes, cooking instruction and physical activity sessions in English and Spanish.

Each year, the garden yields approximately 500 pounds of fresh produce that are distributed to over 150 families.

Community Benefit Highlight

**financial assistance at cost:
\$46,790,400**

COMMUNITY PARTNERSHIPS

We support hundreds of screening and education programs throughout the year. Our staff are extremely active and our nurses and doctors can even be found traveling to Haiti, Kenya, Rwanda, Uganda, Ukraine and more, to provide free medical services. Below are just some of Jefferson's many outreach efforts in our region.

(PARTIAL LIST)

- *A Better Start*
- *ACLAMO Bilingual Health Lecture Series*
- *A Matter of Balance*
- *Adult Day Services*
- *Annual MLK Day of Service*
- *Bucks County "Warm Handoff" Partnership (alcohol and addiction services)*
- *Camden County Mental Health and Social Service Resource Fair*
- *Center for Interprofessional Practice & Education Health Mentors Program*
- *Centering Program*
- *Cherry Hill Mall COVID and Flu Shot Events/ National Night Out*
- *Chronic Care Management Program*
- *Collaborative Opportunities to Advance Community Health (COACH)*
- *Collingswood May Fair/Nat'l Night Out*
- *Collingswood Pride Committee National Coming Out Night Event*
- *Community-based Blood Pressure Screenings and Education*
- *Community Health Worker Academy*
- *Community Outreach Team Events*
- *Cribs For Kids Safe Sleep Program*
- *DadLab for Fathers-to-Be Program*
- *Dental Access Program*
- *Diabetes Self-Management Education and Diabetic Day*
- *Digital Health Equity Taskforce*
- *Discover Healthcare Summer Teen Program*
- *ElderMed Program*
- *Faith-based Community Nursing*
- *Farm to Families*
- *Frankford Community Garden*
- *Fresh For All*
- *Fresh Rx - Go For the Greens Onsite Produce Garden*
- *Gun Violence Taskforce*
- *Hansjörg Wyss Wellness Center*
- *Heart Smarts Community Outreach*
- *Holiday Share Employee Adopt a Family Program*
- *HT PRIDE Festival Weekend and Parade*
- *Imagine a Healthier You - High Blood Pressure Program*
- *It's Just Respect - Disability Etiquette Training Program*
- *Legal Community-based Workshop Series*
- *Look Good...Feel Better*
- *Lunch and Learn Nutrition Programs*
- *Men's Health Day*
- *Metro Police Summer Carnival Night and Community Health Fair*
- *Neurorestoration Series*
- *Oncology Navigation*
- *Peripheral Artery Disease (PAD) High-Risk Communities of Color Project*
- *Pre-Med Shadow Program*
- *PRIDE Educational Institute*
- *Project Aim Girls Empowerment Program*
- *Project ROLE: Reducing Readmissions/Improving Outcomes for ESL patients*
- *Safe Harbor Grief Program for children*
- *Save Your Soles Foot Screenings*
- *School-Based Student Assistance Program*
- *Sidney Kimmel Cancer Center Mobile Cancer Screening Unit*
- *Somerdale Concert Series*
- *Stop the Bleed Trauma Education*
- *Stroke Awareness Community Day*
- *Stroke Prevention Webinars*
- *Trauma Intervention Programs*
- *The Frazier Family Coalition for Stroke Education and Prevention*
- *VaxConnect Taskforce*
- *VotER*
- *What's Cooking - Healthy Cooking Classes*
- *ZERO Prostate Cancer Run/Walk Events*

Learn more about the important work we support in all our communities. Visit: jeffersonhealth.org/communityhealth

THOMAS JEFFERSON UNIVERSITY

+ WE IMPROVE LIVES





Jefferson students, now over 8,300 strong, are service oriented, and as they become more involved with grassroots initiatives they are more keenly aware of the needs of their communities. This catalyzes student and faculty-led volunteer initiatives and develops our students into high-contributing, empathetic and socially minded professionals. Service to others is at the core of our University, dating back to the 1825 opening of Jefferson Medical College's first medical clinic—specifically created to care for the impoverished. Our commitment to the community has never wavered.

COMMUNITY OUTREACH

Here, we'd like to highlight a few of the numerous community-based programs and grassroots initiatives that are emblematic of the University's broad-based efforts.



BETHESDA WELLNESS PROJECT

The Bethesda Project is a nonprofit that provides shelter, housing and supportive services to adults experiencing homelessness – with the goal of helping them regain their dignity and self-worth. Jefferson students organize several campus events to create wellness packages for the Bethesda Project – including uplifting cards, healthy snacks and personal wellness products to assist this community.

COMMUNITY HEALTH WORKER PROGRAM

This is a training and professional development program for Jefferson staff, community partners and unemployed or underemployed community members. The goal of CHW is to expand opportunities for community members to enter healthcare careers by creating an accessible on-ramp. CHWs are trained to promote health equity by helping individuals navigate the complex healthcare and social service systems, and by providing culturally and linguistically appropriate education, social support and advocacy.

BE YOUR BEST SELF

Jefferson has a longstanding relationship with the Southwark Elementary School, where nearly one-half of the student body speaks English as a second language, and many are the children of new U.S. immigrants. While we provide numerous programs to the school, University students are also focused on males of color within the 4th and 5th grade – when emotional management and social engagement habits are formed. Activities are intended to build a positive self-image among this population of students.



FOOD AS MEDICINE PROGRAM

As part of the pre-clerkship program through the Sidney Kimmel Medical College, students screen Emergency Department patients for social determinants of health, including food insecurity. Patients in need of support are connected through our community health workers to local resources. Our students also volunteer at programs like MANNA.

JEFFHOPE

A collaboration between Sidney Kimmel Medical College, health professions students, faculty and Jefferson Health, JeffHOPE focuses on improving access to health care for the homeless and housing insecure by providing free medical clinics. In partnership with Project HOME, faculty and students offer acute care, emotional support and health education throughout Philadelphia.

**Now in its 30th year,
JeffHOPE sees over
5,000 patients annually.**

MATER

The MATER program is a national model for the treatment of mothers battling opioid addiction. Our dedicated team provides each patient with the tools to become successful parents through individual and group therapy; mindfulness-based parenting education; career counseling and resume-writing sessions; and assistance with community job placement. The Student Opioid Response Team also partners with MATER to collect kitchen items and professional clothing for the residents.

**For over 50 years
the MATER program
has helped hundreds
of mothers suffering
from opioid
addiction.**



JEFFERSON CENTER FOR REFUGEE & IMMIGRANT HEALTH

One of the largest providers in Philadelphia, this center is committed to achieving equity in healthcare access and health outcomes for newly arrived refugees and immigrants. Faculty-led students deliver clinical care to refugees, asylees, and immigrants; conduct research to evaluate and improve the delivery of care to refugees and the larger immigrant population; and advocate for refugees, asylees, and other immigrant populations at the local, state, and federal levels. The Jefferson Center for Refugee and Immigrant Health is one of only four programs in the nation recognized as a Center of Excellence by the Centers for Disease Control and Prevention.

**Our Center
screens more
than 500
refugees
each year.**



+ WE IMPROVE LIVES

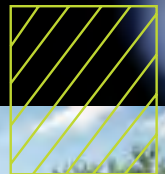
Community Benefit Highlight

**health professions education:
\$254,616,172**



CULTIVATING GREEN SPACE PARK-IN-A-TRUCK

Park-in-a-Truck was launched by Jefferson's Landscape Architecture program in the College of Architecture and the Built Environment. The idea is to help communities convert empty lots throughout the city into community parks – using enough greenery and landscape materials that fit in a truck to complete the project. The University works with local developers, the City of Philadelphia and community organizers to locate spaces, raise money and allow those who live nearby to actually construct and maintain a park of their own.





REHABILITATION SCIENCES STEP-UP PROGRAM

This comprehensive enrichment program prepares undergraduates from marginalized communities for their graduate degree application process for occupational therapy. The program recently added “It’s Just Respect” training in collaboration with Jefferson Moss-Magee Rehabilitation. The training was developed with input from people with different types of disabilities and teaches organizations how to communicate with and about people with disabilities in community, workplace and healthcare settings. We also offer STEP-UP programs for athletic training, medicine, nursing, physical therapy and speech-language pathology.

Community Benefit Highlight

**cash & in-kind contributions:
\$1,110,568**



NORRISTOWN PROJECT

In a dual effort to combat food insecurity and increase experiential STEM knowledge, Jefferson partners with the Norristown School District to place vertical gardens so middle school students can have hands-on learning opportunities in agriculture and environmental sciences. Jefferson students provide additional support for science education and co-curricular initiatives.

PUENTES DE SALUD CLINIC

Puentes de Salud ("Bridges of Health") promotes the health and wellness of Philadelphia's rapidly growing Latinx immigrant population. Jefferson faculty and residents provide culturally competent care to patients at this clinic.

READING OLYMPICS

Each spring semester, the students on our East Falls Campus invite local elementary school students from the Philadelphia Public School District and the Archdiocese to compete in a scholastic reading competition.



PERIOD PROJECT

Sponsored as a campus-wide activity, students collect feminine products to support adolescents in need throughout the surrounding communities of South Philadelphia.

RAMILY DAYS OF SERVICE

For a quarter century, undergraduate students, faculty and staff have been accompanying new student volunteers annually to various sites throughout Philadelphia to complete **over 1,500 hours of community service.**





STORY INITIATIVE MIGHTY WRITERS WRITING SESSIONS

Mighty Writers El Futuro is a non-profit after-school writing center that serves a largely immigrant community in South Philadelphia. Student volunteers assist school-aged children with writing their own short stories. During writing sessions, Mighty Writers El Futuro students learn how to brainstorm, outline and write their own short stories about superheroes.



THOMAS MIFFLIN SCHOOL

Thomas Mifflin is a pre-K through 8th grade school near Jefferson's East Falls Campus, making it a great partner for volunteer activities. Throughout the year, students and faculty have helped create a mural to communicate the school's mission, goals and commitment to the community; performed cleanups; tutored students; competed with them in Reading Olympics; tended the gardens; and completed many other projects.



STEPHEN KLEIN WELLNESS CENTER: PROJECT HOME

In collaboration with Project HOME, this is a federally-qualified health center in North Philadelphia that provides care to the homeless, the formerly homeless and the underserved. Jefferson medical residents provide care at this center which includes: a pharmacy, legal services, behavioral health consults, a psychiatric nurse practitioner, physical therapy, mental health services, a comprehensive OB program, dental, pantry and laundry services and more.



Community Benefit Highlight

research: \$638,940

COMMUNITY OUTREACH EFFORTS

Listing all the ways in which our University is involved in grassroots efforts can be a challenge – because the list is ever-growing – as is the student enthusiasm for service to others. We support hundreds of organizations in the communities where we live and learn. Below are just some of the many outreach efforts in our region.

(PARTIAL LIST)

- *AIDS Walk Philly*
- *Alex's Lemonade Cancer Walk/Run*
- *American Heart Walk*
- *Anti-Violence Partnership of Philadelphia*
- *Autism Speaks*
- *Be Your Best Self*
- *Bethesda Wellness Projects*
- *Boo at the Zoo*
- *Broad St Run Medical Tent Volunteers*
- *Care Packages for People Experiencing Homelessness*
- *Children's Hospital of Pennsylvania Buddy Walk*
- *Common Humanity Collective Air Filter Event*
- *Community Clean-Up and Community Education Tables*
- *Community Day at SW Philadelphia SDA Church*
- *Cradles to Crayons*
- *DKMS BoneMarrow Thon*
- *Dr. Bernice's Acts of Kindness Event*
- *Drug Take Back Calls*
- *East Falls River Landing Planting*
- *Earth Day*
- *East Falls Tree Tenders Planting Event*
- *E.R. Town Watch Neighborhood Clean-up*
- *Flu Fest*
- *Food Insecurity Network*
- *From Rx to Heroin*
- *Girls, Inc. Events*
- *Hansjörg Wyss Wellness Center*
- *Historic Rittenhousetown Clean-up*
- *Hub of Hope Meal Service Volunteering*
- *Hunger & Homeless Awareness Events*
- *Jefferson Center for Refugee and Immigrant Health*
- *JeffEARTH*
- *JeffHOPE*
- *MANNA Food Assistance Program*
- *MATER Household and Clothing Drive*
- *Mastery Charter High School Health Sciences Club*
- *MLK Day of Service*
- *The Norristown Project*
- *One Thousand Lucky Cranes*
- *Pathways to Housing PA*
- *Period Project*
- *Philabundance Food Drives*
- *Project Care Society Spring Drive*
- *ProjectHOME*
- *PT Moves Philly*
- *Puentes de Salud Clinic*
- *Red Cross Blood Drives*
- *Schuylkill Banks Volunteer Clean Up*
- *Soctober Collection for Local Shelters*
- *Soup-er Bowl Collection Drive*
- *Special Olympics Polar Plunge*
- *Southwark Family Fun Day*
- *Spring Food Insecurity Summit*
- *SpArc Volunteering*
- *Special Olympics*
- *Steps to the Mann Center*
- *STEP-UP Programs*
- *Stephen Klein Wellness Center: Project HOME*
- *Story Initiative x Mighty Writers Writing*
- *Thomas Mifflin School - Garden Planting, Library Renovation Projects, Outside Classroom Projects*
- *Winter Coat Drive for Shelters*
- *Wyss Clinic Volunteering*

Learn more about the important work we support in all our communities.
Visit: jefferson.edu/communityengagement



JEFFERSON HEALTH PLANS



Jefferson Health Plans (JHP), formerly Health Partners Plans, is our health maintenance organization that provides more than 394,000 members with a range of healthcare coverage including Medicare, Medicaid and the Children's Health Insurance Program. As part of its mission, JHP is committed to boosting the health of our community through outreach, education and special events conducted at schools, community centers, churches and other organizations.

Each year, we educate more than 4,000 children and adults on a variety of health topics; provide no-cost health screenings; participate in community events; and host special events like concerts and family health awareness days to educate and impact well-being. Our programs focus on:

- Fitness
- Nutrition
- Asthma management
- High blood pressure management
- Men's health
- Building self-esteem

COMMUNITY PARTNERSHIPS

Here, we highlight just a few community-based programs and grassroots initiatives that are emblematic of JHP's broad-based efforts.



HEALTH PARTNERS FOUNDATION

Through the Health Partners Foundation we make a difference in the community in ways that go beyond the traditional services of a health plan. We support low-income communities in Philadelphia and the surrounding counties with educational programs, scholarships, emergency assistance and more.

By providing a helping hand to families and individuals in need, we're building healthier lives and stronger communities.



JEFFERSON AND JHP MOBILE SCREENINGS

In partnership with the Sidney Kimmel Cancer Center Mobile Screening Van, JHP supports breast cancer screenings at community locations or PCP sites. Three mammography events have been held and JHP is in discussions with Jefferson's Department of Oral and Maxillofacial Surgery to provide preventive pediatric dental visits through this mobile screening van.



ANNUAL NIGHT AT THE ZOO

JHP's annual signature event welcomes its members and their families to a private night at the zoo. Children receive free school supplies, water bottles and healthy snacks. Our 5k scavenger hunt is designed to encourage movement and wellness.

**More than 4,000 members
attend this event annually.**



ACLAMO PARTNERSHIP

ACLAMO is a nonprofit organization in Norristown, PA, that provides educational programs, social services and access to health and wellness programs for the Latino community. JHP funds community navigators who engage its members and assist them with closing care gaps, connecting to preventive care services and social determinant of health resources.

KLEIN LIFE

Jefferson Health Plans maintains a key partnership with Klein Life PA, a non-profit organization that provides social, educational and cultural community programs in Philadelphia. Rooted in Jewish values, Klein Life is dedicated to enhancing the lives of all individuals by providing vital health, wellness, and social events. The organization's executive director also serves on Jefferson Health Plans' Medicare Advisory Committee.



MANNA PARTNERSHIP

Poor nutrition and food insecurity can lead to chronic health issues and more. In addition to the work done by **Jefferson Health and Thomas Jefferson University, Jefferson Health Plans** has been a partner with MANNA since 2015. We have provided over one million medically tailored no cost meals to our Medicaid members with complex health needs and specific dietary requirements. This program has helped members reduce hospital visits, shorten lengths of stay and increase the likelihood of being released to their homes rather than to long-term care facilities.



COMMUNITY OUTREACH EFFORTS

Below are just some of the outreach efforts in our region.

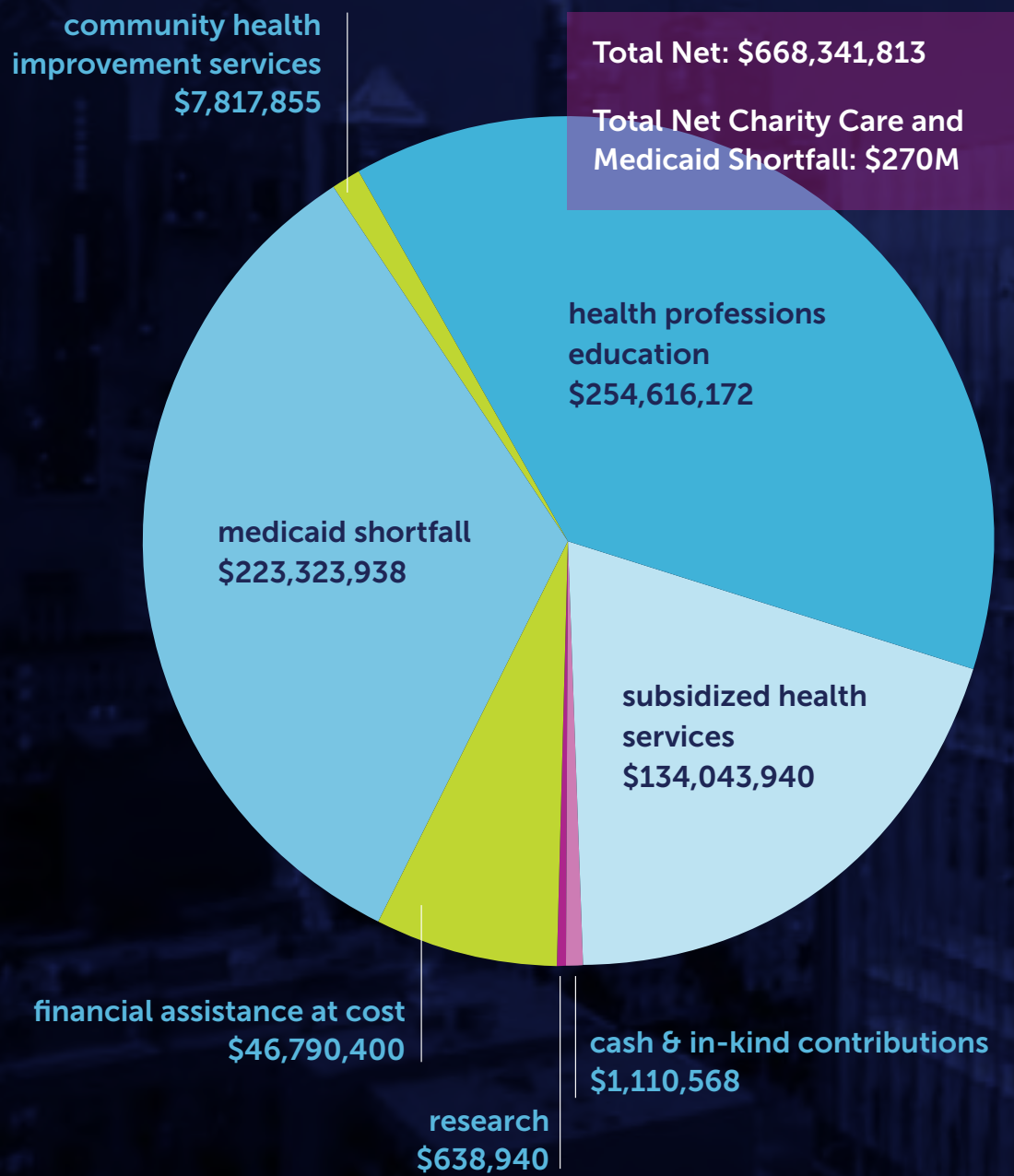
(PARTIAL LIST)

- ACLAMO Partnership
- Annual Night at the Zoo
- Broad Street Ministry
- C.R.A.F.T. Community Art Program
- Healthy Measures
- Healthy Kids Initiative
- Jefferson Mobile Cancer Screenings
- JHP Benefits Resource Fairs
- JHP Professional Development Series
- JHP Community Baby Showers
- Maternal Home Visiting
- MANNA
- Medical Legal Community Partnerships
- Philabundance
- Welfare Pride



Learn more about the important work we support in all our communities.
Visit: jeffersonhealth.org/communityhealth

TOTAL NET COMMUNITY BENEFIT – FY22





Dear Community Members,

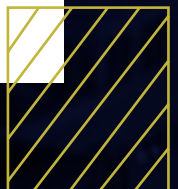
It is an honor to have joined Jefferson as the new Chief Health Equity and Community Impact Officer. I am proud of what this organization has achieved and I am excited to share that we are taking steps to solidify our position as an anchor institution to further benefit the communities we serve. We are mission-driven and committed to improving the lives of those who live and work in these neighborhoods.

As part of this effort, we will be investing in initiatives that will help us understand the community's needs better and develop programs and services that meet those needs. We also will continue to work closely with community leaders, local organizations and other stakeholders to ensure our priorities and efforts align.

We recognize that we have an essential role to play in the well-being of our communities through service, education, access and reducing disparities in health outcomes. We are dedicated to fulfilling that role in the most effective and impactful way possible. By working together with community members, we can create a brighter, healthier future for all. Thank you for your ongoing support, and we look forward to continuing to serve you.

Sincerely,

Keith Leaphart, DO, MBA
EVP | Chief Health Equity and Community Impact Officer
Office of the CEO





Jefferson

HOME OF SIDNEY KIMMEL MEDICAL COLLEGE

1101 Market Street
Philadelphia, PA 19107

jeffersonhealth.org/about-us/community